



MATADOR 3

Seagoing Floating Sheerlegs
1800 Tons Lifting Capacity

Call Sign
PBHF

Classification
Bureau Veritas
I 3/3
Pontoon No Propulsion

Year of Construction
2002

Dimensions

Length o.a.	70,00 m
Beam	32,00 m
Depth	6,00 m
Draught	3,00 m
Gross Tonnage	3898
Nett Tonnage	1169

Accommodation
8 persons

Anchor Winces
Aft:
2 x 30 T winch with cap. for 600 m. of 38 mm wire rope
Forward:
1 x 26 T winch with cap. for 250 m. of chain

Mooring Winches

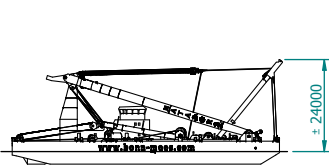
Aft:
2 x 30 T winch with cap. for 600 m. of 38 mm wire rope
Forward:
2 x 30 T winch with cap. for 600 m. of 38 mm wire rope
2 x 15 T winch with cap. for 250 m. of 24 mm wire rope

Lifting Capacity
See diagram

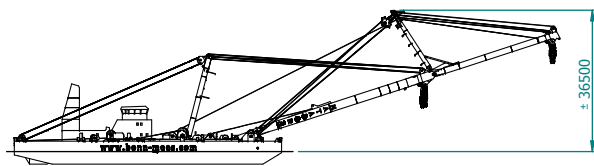
Bonn & Mees Drijvende Bokken B.V.
Sluisjesdijk 123
3087 AE Rotterdam

Tel: +31 – (0) 10 429 05 44
Fax: +31 – (0) 10 429 42 70
E-mail: info@bonn-mees.com
Website: www.bonn-mees.com

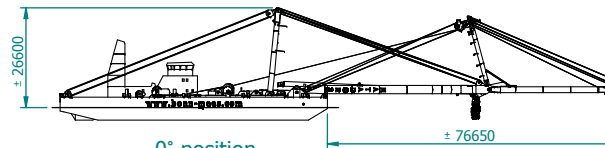




Sea going position



Bridge passing position



0° position

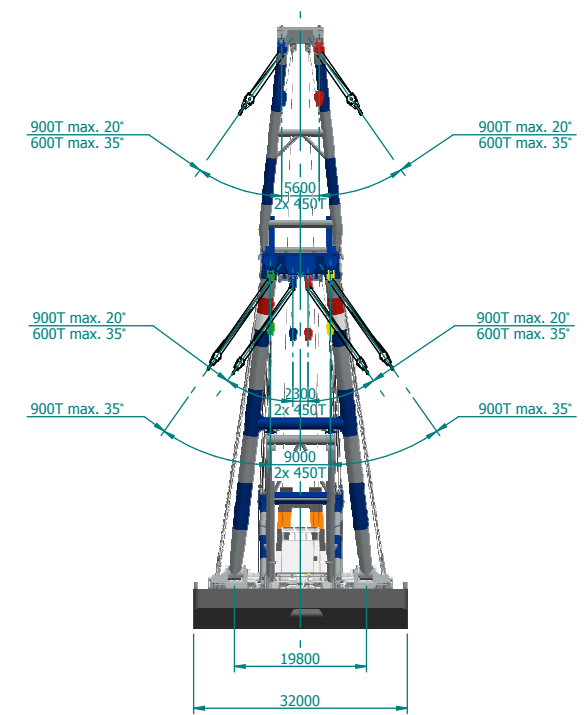
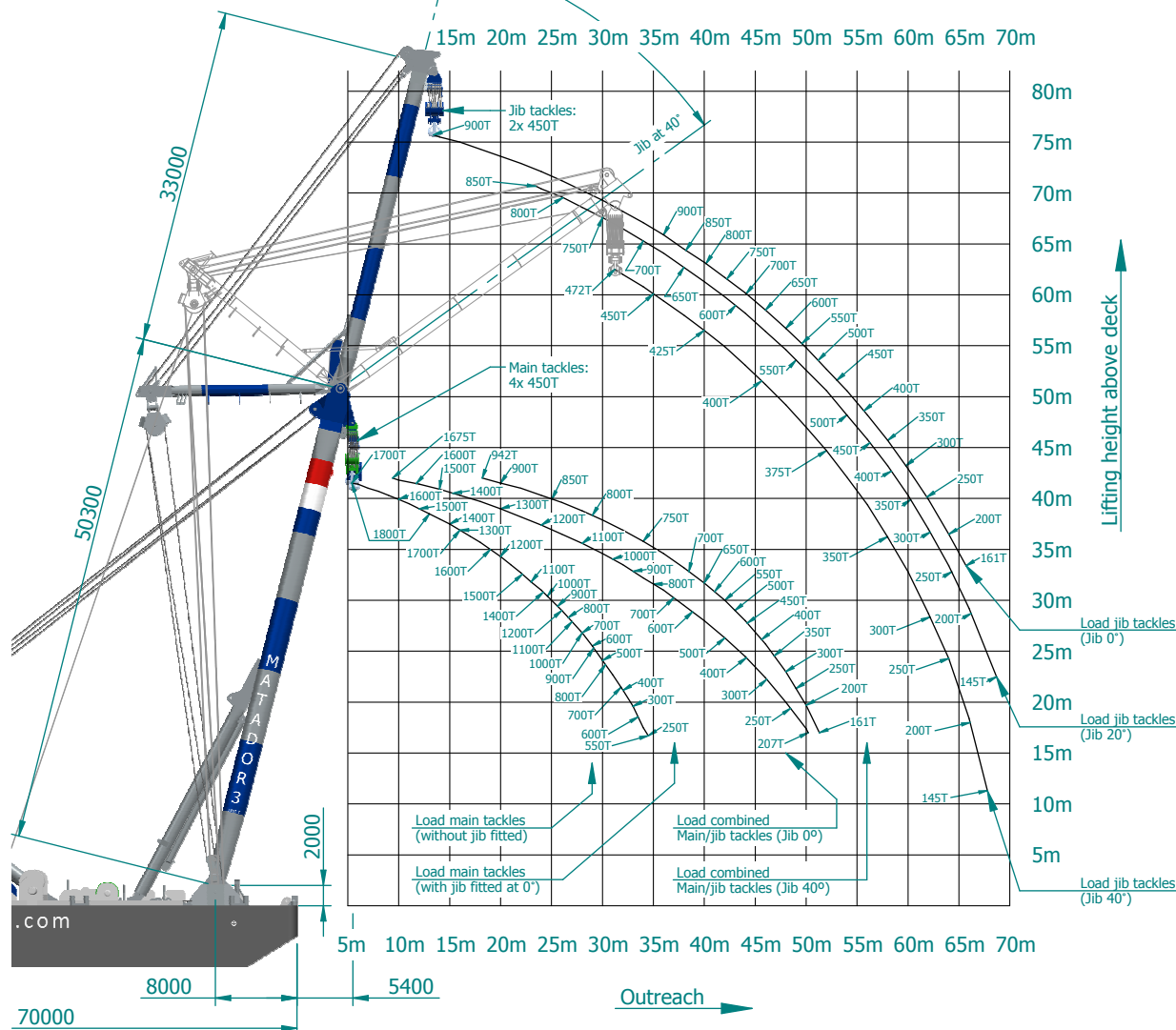
PRINCIPAL PARTICULARS:

LENGHT:	pontoon	70.00m
BREADTH:	mid.	32.00m
DEPTH:	mid.	6.00m
STERN THRUSTERS:		
BOW THRUSTER:		2x 400kW
ANCHOR WINCH:		1x 800kW
ANCHOR/MOORING WINCH:		1x 26 TON
HOOK SIZE ACC. TO DIN 15402 (B):		6x 30 TON
		#125V

ALL LOADS IN METRIC TONS

CALL SIGN:	PBHF
CLASSIFICATION:	BUREAU VERITAS
YEAR OF COMPLETION:	2002

Stepless adjustment from 0° to 40°



Rev	Date	Drawn	Description	GMO	Approved
	17-9-2013	JB	INITIAL ISSUE		
PROJECT			MATADOR 3		
SUBJECT			CAPACITY DIAGRAM ENGLISH		
Drawing		Originator	Scale	Units	Scale
JB		JB	A3	mm	N/A
Client		BONN & MEES			
Drawing number		2013-INTERNAL-1001			

© Copyright Bonn & Mees. This document is the property of Bonn & Mees and may contain confidential and proprietary information. It may not be used for any purpose other than that which it is supplied. This document may not be wholly or partly disclosed, copied, duplicated or in any way made use of without prior written approval of Bonn & Mees.

